

NMNEC: TEN YEARS OF PROGRESS AND SUCCESS

Jessica Gutierrez, NMNEC Program Manager
Judy Liesveld, PhD, PPCNP-BC, CNE, Associate Dean of Education & Innovation UNM College of Nursing, NMNEC Leadership Council Member
Mary Wright, MSN, RN, CNS, CNE, NMNEC Outreach Program Manager

Update on NMNEC and Participating Nursing Programs

The New Mexico Nursing Education Consortium (NMNEC ♦"nem-nek") is a collaborative of state- or tribally-funded nursing programs across the state with a common pre-licensure RN nursing curriculum that supports multiple pathways into nursing. One of NMNEC's initial goals was to increase BSN prepared nurses in NM. Presently, the NMNEC RN curriculum is taught at 12 nursing programs in 16 locations throughout NM with the BSN degree available at 10 nursing programs in 14 locations. Prior to NMNEC, the BSN was only offered at two nursing programs! In addition, many other schools and clinical partners support NMNEC's efforts.

NMNEC's 10th Anniversary and Initial NM Legislative Funding

Nearly one year has passed since NMNEC celebrated its tenth anniversary at a two day statewide meeting in October, 2019. The keynote address "Beyond Collaboration" was given by Mr. Mark Bennett, founder of Decision Resources. The theme of a 'Vision of Nursing Education in New Mexico' was also highlighted with presentations on The State of Nursing in New Mexico by Dr. Barbara Damron (UNM), Research/Scholarship/Nursing Science by Dr. Judy Liesveld (UNM), Nursing Education Relationships/Community Building by Dr. Alexa Doig (NMSU), and Rural Nursing Education by Ms. Shawna Kemper (SJC) and Ms. Tricia Maule (SJRM). Dr. Nancy Ridenour, former Dean at UNM College of Nursing (UNM CoN), and Dr. Jean Giddens, former Executive Dean at UNM CoN, both instrumental in the creation and development of NMNEC, presented historical perspective as well as vision for NMNEC's future. Ms. Shauna Mangum (SJC) also presented on the legislative process that NMNEC followed to secure \$500,000 for 2019/2020. This

NMNEC Nursing Programs	Locations	ADN at Community College	BSN at University	Co-enrolled ADN/BSN at Community College
UNM	Albuquerque, Rio Rancho		X	
CNM	Albuquerque, Rio Rancho	X		X
SJC	Farmington	X		X
SFCC	Santa Fe	X		X
UNM-Taos	Taos	X		X
UNM-Gallup	Gallup	X		X
UNM-Valencia	Los Lunas	X		X
NMSU	Las Cruces, Alamogordo, Grants		X	
CCC	Clovis	X		
LCC	Las Vegas	X		
NMJC	Hobbs	X		
WNMU	Silver City		X	

was NMNEC's initial state funding and was supported by many NM legislators. Continuance of support from legislative funding will sustain NMNEC's future goals and mission!

NMNEC Faculty Committees and Task Forces

NMNEC is busy at the consortium level! The statewide NMNEC committees consisting of faculty representing each of the NMNEC schools meet monthly throughout the year. The NMNEC Curriculum Committee just finished a three-year review of all of the curricular concepts and exemplars that form the base of the common statewide NMNEC pre-

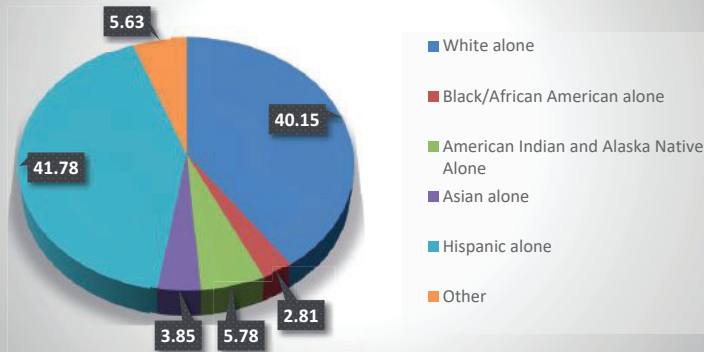
licensure curriculum. Fifty concepts were updated and one new concept of genomics was added, thereby keeping the curriculum current and relevant.

The NMNEC Program Evaluation Committee looks at compiled student surveys and NMNEC annual program survey data while tracking NMNEC outcomes. In tracking the NCLEX first-time pass rate of graduates over from 2017 through 2019, the pass rate for all NMNEC graduates is consistently been at the national pass rate. The NMNEC Program Evaluation Committee has also noted that the NMNEC co-enrolled ADN/BSN graduates have consistently had a pass rate well above the national average (92.86% in 2019).

2018-2019 NMNEC Graduates* Fall/Spring/Summer	
Total University-based NMNEC BSN Graduates	238
Total Community College-Based NMNEC ADN/BSN Co-enrolled Graduates	122
TOTAL NMNEC BSN Grads	360
TOTAL NMNEC ADN Grads	351

* As reported in the 2018-2019 NMNEC Annual Program Survey

2018-2019 Percentage (%) of NMNEC Graduates by Race/Ethnicity*



* As reported in the 2018-2019 NMNEC Annual Program Survey

The NMNEC Diversity Committee is charged with providing diversity resources and education to better inform the work of NMNEC, including the curriculum. In the wake of national events related to racism in the summer of 2020, the work of this committee has become even more critically important and committee members will be working to facilitate dialogue about racism and diversity in the NMNEC curriculum and among faculty and students.

In addition to the NMNEC Committees, a number of task forces have been formed by NMNEC to work on specific needs as they arise. The NMNEC LPN Task Force developed a pathway for licensed LPNs to enter NMNEC programs and receive credit-for-prior learning that provides an opportunity to complete their RN program in a shorter time frame. The work of the NMNEC RN-BSN Task Force resulted in recommendations that can provide an opportunity for NMNEC ADN graduates to complete an RN-BSN program without having to repeat some nursing content they already received in their NMNEC ADN program. A NMNEC Simulation Task Force completely updated and revised the NMNEC Simulation Plan in 2019 which standardized what simulations were required in all NMNEC programs.

NMNEC Student Diversity

New Mexico is one of five majority-minority states. Approximately 49% of the population identifies as Hispanic or Latino, 11% identify as American Indian/Alaska Native, and 2.6% identify as African American (U.S. Census Bureau, QuickFacts, New Mexico, 2019). One of NMNEC's goals is to increase workforce diversity by improving nursing education for minorities, particularly

in rural areas. NMNEC will continually work to graduate nurses who mirror the population of our state.

Consortium Collaboration during COVID

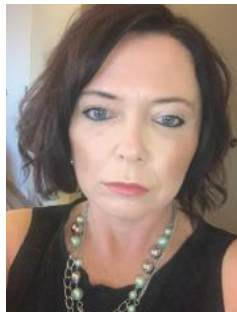
During its first 10 years, NMNEC has provided participating programs with multiple opportunities to share, collaborate and support each other so that no one program has to come up with an answer to a challenge by themselves. This ability to share and collaborate provided a strong

continued on page 22 >>>

The New Mexico Breastfeeding Task Force

Thanks & ACKNOWLEDGES

all nurses, doctors, lactation and healthcare professionals who support breastfeeding mothers!



Kimberly Smetzer

The amazing support that Kimberly Smetzer received while breastfeeding her children is the driving

force behind where she is today. Kimberly has worked in two countries and four states while accompanying her military spouse. She is an International Board Certified Lactation Consultant, (IBCLC) and has been able to use that knowledge in all of her positions. She has worked as a lactation consultant and nurse manager at Mountain View Regional Medical

Center and as a clinical consultant for the New Mexico Breastfeeding Task Force for 8 years supporting hospitals as they have navigated the Baby-Friendly Pathway and moved toward a time when the majority of babies are born in a hospital that supports best practices in breastfeeding.

WE THANK YOU!



New Mexico
Breastfeeding Task Force

For more information about New Mexico Breastfeeding Task Force, please visit, **BreastFeedingNM.org**

The New Mexico School for the Blind and Visually Impaired, Alamogordo campus is accepting applications for a full-time 9 month RN and 9 month RN Sub. Positions will remain open until filled.

To apply: For complete information including requirements and instructions on how to apply for these positions please visit our website at: <http://www.nmsbvi.k12.nm.us/> or call (575) 437-3505

New Mexico School for the Blind and Visually Impaired

1900 N. White Sands Blvd.
Alamogordo, NM 88310



<<<continued from page 21

foundation for supporting the NMNEC programs when the COVID-19 pandemic came and the New Mexico governor instituted 'Shelter in Place' orders in the middle of a busy spring 2020 semester. Immediately the NMNEC Program Directors set up weekly meetings with NMNEC Leadership Council to share and problem solve multiple concerns that arose with the COVID-19 pandemic, including

how to provide clinical via computer-based modalities. The discussions and sharing during these meetings resulted in a number of collaborative solutions including the development of guidelines for key components of computer-based clinical simulations along with a checklist that each program could use for tracking that the virtual simulations they were developing and implementing met the New Mexico Board of Nursing rules and the standards of national nursing accreditation agencies. NMNEC faculty also shared teaching ideas and resources via a NMNEC 2020 Clinical Teaching Ideas web page that was rapidly developed and set up as a place to store some of the best ideas as faculty were inundated with emails and webinars while they were maintaining the ability of students to progress through their NMNEC nursing programs. NMNEC Leadership Council facilitated a virtual statewide NMNEC faculty meeting in April as well as faculty sharing meetings in late April/early May. These meetings provided forums for faculty to share ideas and support each other through the major transitions to online teaching of nursing courses.



Odds of a child becoming a professional athlete: 1 in 16,000

Odds of a child being diagnosed with autism: 1 in 88

Some signs to look for:

No big smiles or other joyful expressions by 6 months.

No babbling by 12 months.

No words by 16 months.

To learn more of the signs of autism, visit autismspeaks.org



AUTISM SPEAKS™
It's time to listen.



Nursing News & Views is the official Journal of the New Mexico State Board of Nursing. 32,000 copies mailed and emailed statewide to every nurse of every degree, every nursing student, hospital administrator, and nursing school administrator in New Mexico for times a year.

for advertising
information, contact
MICHELLE GILBERT
at 501.221.9986, ext.120 or
mgilbert@pcipublishing.com

NMNEC's Research & Scholarship Initiatives

Since the start of the COVID-19 pandemic, several NMNEC faculty members, from nursing programs throughout the state, have initiated collaboration on research and scholarship projects. These projects include evaluating the use of virtual simulation with the outcomes of nursing graduates, researching the lived experience of senior and novice nursing faculty during the pandemic, and identifying themes and outcomes from NMNEC program director meetings necessitated by the COVID-19 pandemic. NMNEC hopes to contribute to knowledge gained during this critical time that will move nursing education forward in years to come.

This sharing and collaboration among programs has always been a strength of NMNEC and during the COVID-19 pandemic, it proved to be an invaluable source of mutual self-support for NMNEC programs. NMNEC looks forward to building on that strength during the next 10 years to benefit the nursing workforce of New Mexico. Check out the newly updated NMNEC website at www.nmneec.org.

Current NMNEC Leadership Council Members

Position	School	Member Name	Email Address
University, BSN	New Mexico State University	Anita Reinhardt	acrein@nmsu.edu
University, BSN	University of New Mexico	Judy Liesveld	jliesveld@salud.unm.edu
University, BSN	Western New Mexico University	Krista Wood	krista.wood@wnmu.edu
Community College ADN	Central New Mexico Community College	Diane Evans-Prior	devansprior@cnm.edu
Community College ADN	University of New Mexico-Taos	Melissa Wohltman	moffenha@unm.edu
Community College ADN	San Juan College	Shawna Kemper	kempers@sanjuancollege.edu
Community College ADN	Santa Fe Community College	Terri Tewart	Terri.tewart@sfcc.edu
Community College ADN	VACANT		
LPN Program	Albuquerque Public Schools	Margaret Hendrix	margaret.hendrix@aps.edu
RN-to-BSN Program	Northern New Mexico College	Ellen Trabka	etrabka@nmmc.edu
Urban Clinical Partner	Presbyterian Healthcare Services	Johanna Stiesmeyer	jstiesmey@phs.org
Rural Clinical Partner	San Juan Regional Medical Center	Tricia Maule	pmaule@sjrmc.net

Special thanks to Jenny Landen, SFCC, and Misty Stine, NMJC, for their years of service to the NMNEC Leadership Council.

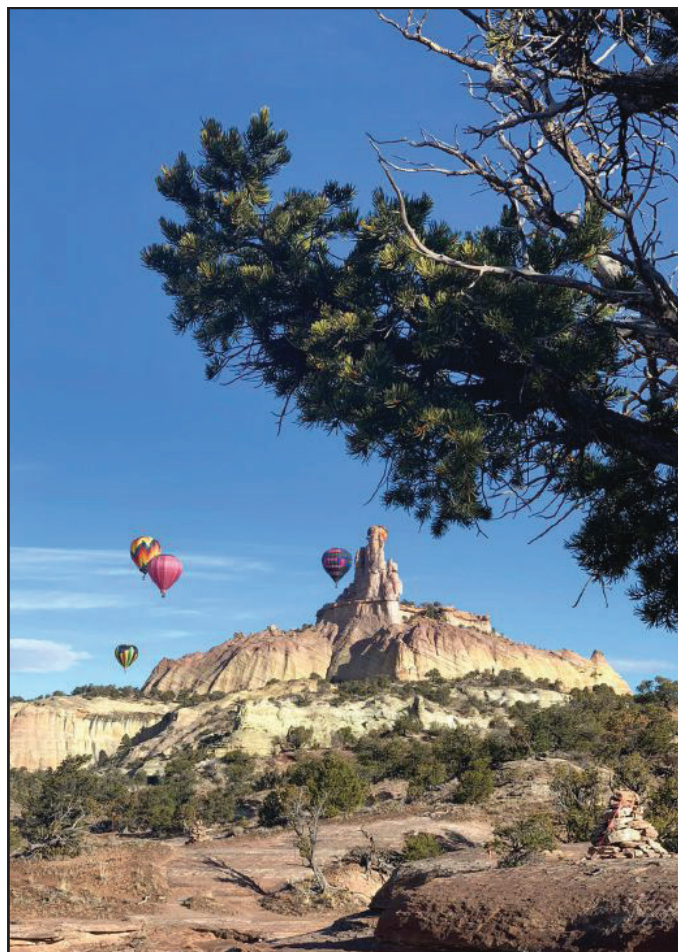
Jenny Landen provided leadership, guidance, and wisdom to NMNEC for over 10 years. Misty Stine provided leadership as the ADN Co-Chair of the NMNEC Curriculum Committee and was instrumental in guiding the NMNEC LPN Exit Taskforce.

Current NMNEC Staff

Program Manager	Jessica Gutierrez	jegutierrez@salud.unm.edu
Program Outreach Manager	Mary Wright	mwright@salud.unm.edu

NMNEC Committees:

- Curriculum Committee
- Program Evaluation Committee
- Diversity Committee



For your commitment, compassion,
and bravery as we face this healthcare crisis...
We Thank You!

**We Are Hiring Registered Nurses for
Inpatient and Outpatient Positions!**

Gallup Indian Medical Center

We are a 78-bed hospital in Gallup, NM on the border of the Navajo Nation. Enjoy a work/life balance with the plateaus and mountains offering hiking and camping as well as close proximity to skiing and Albuquerque's services and cultural events.

We offer:

- Recruitment/Relocation
- Competitive Salary
- Federal Benefits
- Loan Repayment Site Eligible

Contact our Nurse Recruiter:

Myra Francisco

505-726-8549

myra.francisco@ihs.gov

<http://bit.ly/gsu-rn>

Navajo Area IHS – Gallup Service Unit

Location: Gallup, NM Tohatchi, NM

